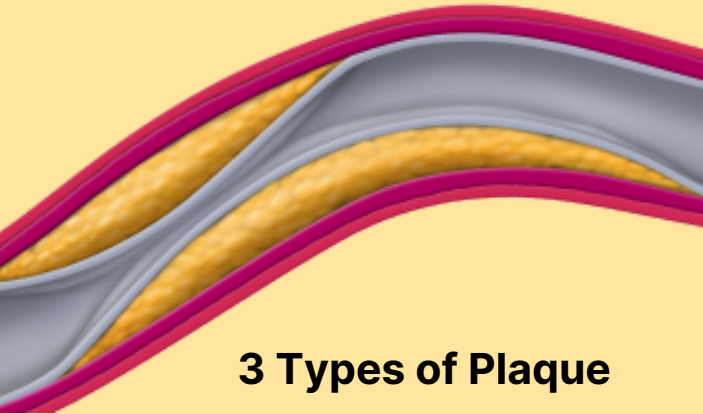


# Calcium Scores Are Outdated

Our AI-powered CCTA analysis  
generates a 3D model of your  
coronary arteries, revealing:

**Stenosis (narrowing)**



## 3 Types of Plaque



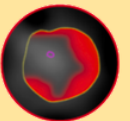
**Calcified plaque**

*Low-risk*



**Soft plaque**

*Moderate-risk*



**Necrotic soft plaque**

*High-risk*

## TrueScan

5015 4th St N. Suite B  
St. Petersburg, FL

727-256-0095

hello@truescanmri.com

truescanmri.com



@truescanmri

*All scans are HSA/FSA eligible*

*Inquire about insurance coverage*



## Prevent Heart Attacks

Made Possible With  
CCTA AI Scans



## Why Do 50% of Heart Attacks Happen Unexpectedly?

Traditional tests – like calcium scoring – only measure calcified plaque. They miss what really matters.

**The real danger is soft plaque.** Calcium scores can show “0” while high-risk plaque silently builds – the reason many heart attacks strike without warning.

A CCTA with AI is a **non-invasive heart scan** that uses CT imaging and advanced AI to measure all types of plaque in your coronary arteries.

## Prevent Heart Attacks with Precision

**CCTA reduces death and heart attacks by 41% in just 5 years.** When soft plaque is found, treatment can shrink it, stabilize arteries, and prevent heart attacks.

## Pricing



**CCTA with AI**

15 min

**\$1,295**

AI-powered analysis of coronary arteries. Includes a physician consult to review results.

## Ready to Schedule?

Call us today or ask your doctor to send an order for your CCTA with AI.

## CCTA with AI

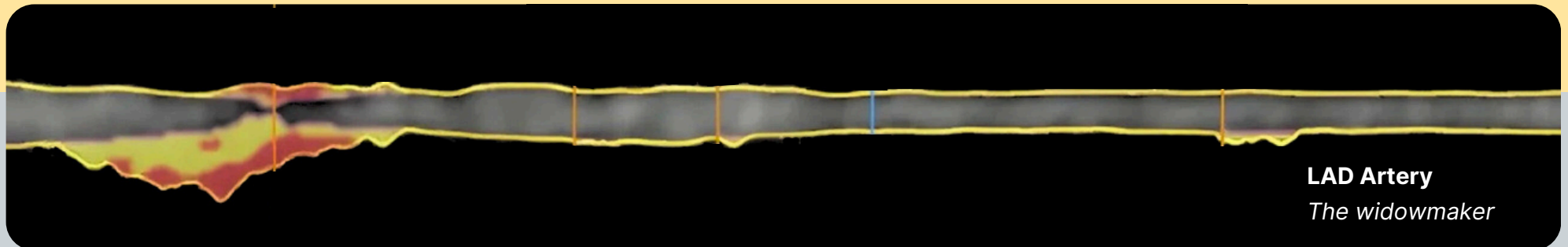
**Calcium scoring would label this patient as zero risk.** CCTA uncovers dangerous soft plaque and nearly 100% blockage, enabling life-saving treatment.

## The Advantages of CCTA:

- Identify soft and calcified plaque
- Enable treatment before a heart attack
- Avoid invasive, unneeded procedures

## What's Included:

- ✓ 15-minute CT scan
- ✓ Detailed cardiology report
- ✓ 1:1 video consult with physician



**283 mm<sup>3</sup>**

Total plaque volume

**58 mm<sup>3</sup>**

Necrotic soft plaque volume

**225 mm<sup>3</sup>**

Soft plaque volume